



شركة الصناعات الكهربائية
ELECTRICAL INDUSTRIES CO.



ELECTRICAL INDUSTRIES CO.

TRANSFORMING THE INDUSTRY
WITH EFFICIENT POWER

TABLE OF CONTENTS

Who We Are	3
Vision & Mission	4
Chairman's Message	5
Managing Director's Message	6
Corporate Structure	7
EIC at a Glance	9
Our Journey	11
Financial Strength	14
Industries We Power	16
Certifications & Quality Standards	18
Client Trust & Global Reach	20
Our Companies	22
Our Products	28
Contact Us	58

WHO WE ARE

Electrical Industries Company (EIC) is a publicly listed Saudi joint-stock company, dedicated to powering the region's critical infrastructure through advanced electrical manufacturing and engineered solutions.

We bring together a portfolio of specialized companies serving the full spectrum of the power value chain – from transmission to distribution and industrial applications. Our legacy is built on technical leadership and a commitment to quality.

Our subsidiaries design and manufacture a wide range of electrical equipment, including distribution and power transformers, medium and low voltage switchgears, packaged substations, protection and control panels, cable management systems, and other key components essential to modern electrical networks. We also offer comprehensive engineering, testing, commissioning, and field services to support the full project lifecycle.

EIC plays a vital role in powering utilities, oil & gas fields, large-scale infrastructure, and industrial and renewable energy projects across Saudi Arabia, the GCC, and international markets.

With a manufacturing footprint exceeding 200,000 m² and a workforce of more than 2,000 professionals, we are committed to delivering reliable, sustainable, and locally developed solutions that align with Vision 2030 and help shape the energy systems of tomorrow.



VISION

To be a global leader with localized capabilities in Electrification and Automation Business enabling more sustainable and efficient future. accountability in all business activities and conduct.

MISSION

- To design, manufacture, and deliver high-quality electrification and automation solutions that enhance operational efficiency and support the transition to more sustainable future
- Enabling sustainable growth through strategic partnerships, leveraging proprietary technologies and in-house research and development capabilities
- Advancing Industrial capabilities through localization and know how transfer
- Creating long-term value for shareholders, employees, and communities we serve

CORE VALUES

- **Excellence:** We pursue the highest standards in engineering, manufacturing, and customer service
- **Innovation:** We embrace new technologies and continuously improve to meet evolving market needs
- **Partnership:** We collaborate with customers, suppliers, and partners to drive mutual success
- **Sustainability:** We are committed to environmental responsibility, efficient use of resources, and creating sustainable growth
- **People & Safety:** We invest in our people, prioritize safety, and develop local talent for future capabilities
- **Integrity:** We act with honesty, transparency, and accountability in all business activities and conduct





Chairman's Message

At EIC, our purpose is rooted in national development and industrial strength. Over the years, we have built an integrated ecosystem of electrical manufacturing through strategic investments, strong partnerships, and a deep commitment to localization.

As Saudi Arabia moves forward with Vision 2030 and broader economic transformation, EIC continues to play a vital role in powering infrastructure, supporting essential industries, and building sustainable value through technology and innovation. Our companies STC, WESCOSA, SPTC, and Pauwels Transformers each contribute to this mission with specialized capabilities and regional reach.

Looking ahead, we are focused on expanding our footprint, elevating quality, and empowering future talent. We remain committed to being a trusted, forward-thinking partner for governments, industries, and communities in the Kingdom and beyond.

Yousef Ali Al Quraishi
Chairman of the Board



Managing Director's Message

At EIC, we believe that long-term success comes from aligning industrial excellence with national development goals. With a legacy built on trust, innovation, and partnerships, EIC has evolved into one of the region's leading providers of integrated electrical solutions.

Through our group of specialized companies including STC, WESCOSA, SPTC, and Pauwels Transformers, we serve critical sectors such as utilities, infrastructure, oil and gas, and renewables. Our commitment to reliability, quality, and local value creation defines how we support the Kingdom's growth and extend our reach across the Middle East, Africa, and Europe.

As we expand our capabilities, modernize our production, and invest in localization and talent, EIC remains focused on delivering sustainable solutions that power communities, industries, and national transformation.

Eng. Tariq Mohamad Al Tahini
Managing Director, EIC



CORPORATE STRUCTURE

BOARD OF DIRECTORS

EIC Holding's Board of Directors includes leading names in the business sector especially in the industrial sector.



Mr. Yousef
Ali Al Quraishi
Chairman



Eng. Mahmoud
Mohammed Al Toukhi
Vice Chairman



Eng. Tariq
Mohamad Al Tahini
Managing Director



Mr. Jameel
Abdullah Al Molhem
Member



Mr. Sattam
Abdulaziz Al Zamil
Member



Mr. Faisal
Saleh Al Quraishi
Member



Mr. Fahad
Saad Al Tuwajri
Member



Eng. Khaled
Suleiman Al Harbi
Member



EIC AT A GLANCE



Public Listing: Listed on the Saudi Stock Exchange (Tadawul)



Headquarters: Dammam, Kingdom of Saudi Arabia



Employees: Over 2,000



Regional Reach: Operations and exports across the Middle East, Africa, and Europe

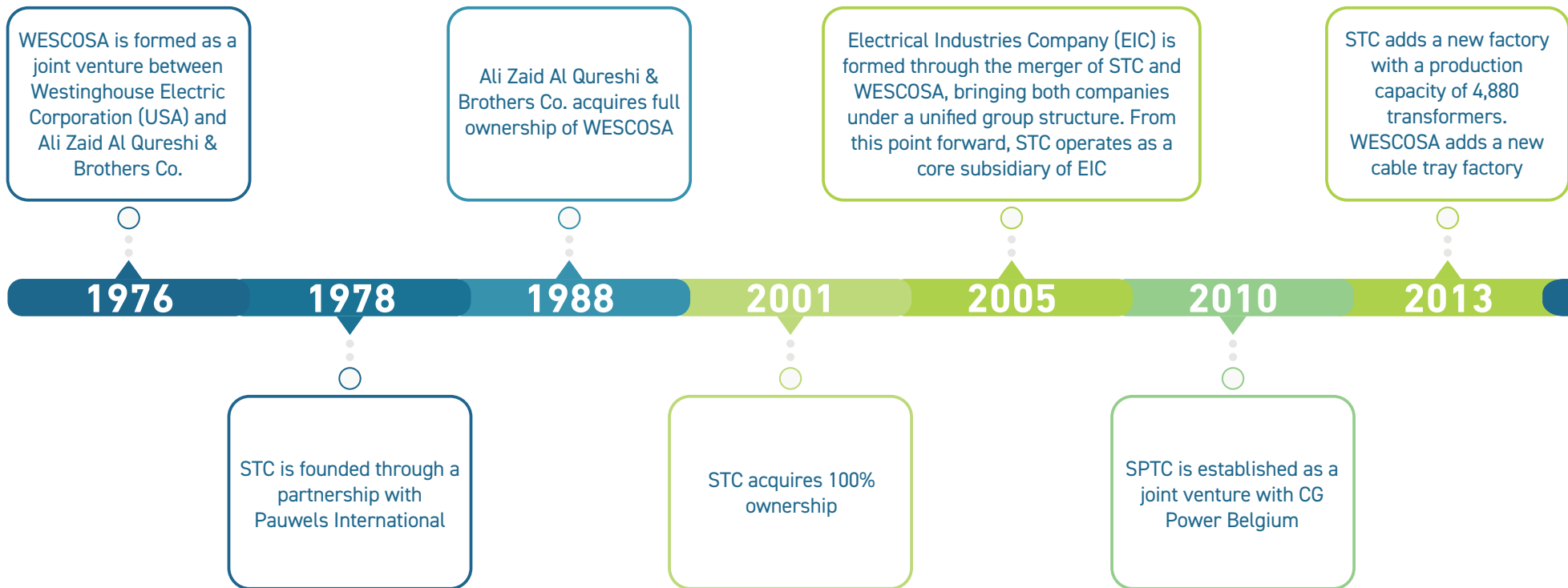
Subsidiaries





OUR JOURNEY

OUR JOURNEY



Introduction of IEC-compliant LV/MV switchgears. EIC becomes a publicly listed company on the Saudi Stock Exchange (Tadawul)

2014

EIC participates in establishing GCC Lab, a closed joint stock company, with a 2.5% equity share

2015

EIC acquires full ownership of SPTC

2017

EIC establishes Pauwels Transformers in Belgium

2021

EIC increases its share capital from SAR 450M to SAR 562.5M

2023

SPTC completes a 70% production capacity expansion

2024

SPTC: Expansion into manufacturing extra-high voltage transformers and reactors (380 kV). Investment: SAR 192M. Expected completion: 2026

PRESENT

WESCOSA's Expansion of small power transformer production facility. Investment SAR 23M. Expected completion 2026



Financial Strength





Financial Strength

As a publicly listed company on the Saudi Exchange (Tadawul: 1303), EIC maintains a strong financial foundation that reflects steady growth and operational resilience.

Total Revenue (2025): SAR 2.29B

Net Profit After Zakat & Tax (2025): SAR 630M

Total Assets: SAR 2.59B

Total Shareholders Equity: SAR 1.29B

Earnings Per Share (EPS): SAR 0.57

This growth is underscored by a 56.8% increase in net profit compared to 2024, demonstrating improved performance across EIC's subsidiaries. Strong equity and profitability position EIC to invest in innovation, expand production capacity, and pursue regional and global opportunities in the energy and infrastructure sectors.



Industries **We Power**



Industries We Power

EIC powers critical sectors at the heart of national growth and regional development. Through its group of specialized companies, EIC supplies products and services that support high-reliability infrastructure and industrial operations, from energy transmission to complex megaprojects.

Key Sectors Served



Utilities & Power Generation

Supporting national and regional electricity providers with transformers, switchgears, and substations that meet the highest grid standards.



Oil & Gas

Delivering tailored electrical systems for upstream and downstream applications, including petrochemical facilities and refineries.



Infrastructure & Smart Cities

Powering transport networks, airports, metro systems, water treatment plants, and smart grid integration projects.



Renewables & Energy Transition

Supplying transformers, control panels, and mobile substations to solar and wind energy projects across the region.



Industrial & Commercial

Supporting manufacturing plants, logistics zones, commercial developments, and high-demand facilities with safe and efficient power systems.



Export & International Projects

EIC's reach extends across the Middle East, Africa, and Europe, with successful deliveries to over 50 countries through its global operations and partnerships.

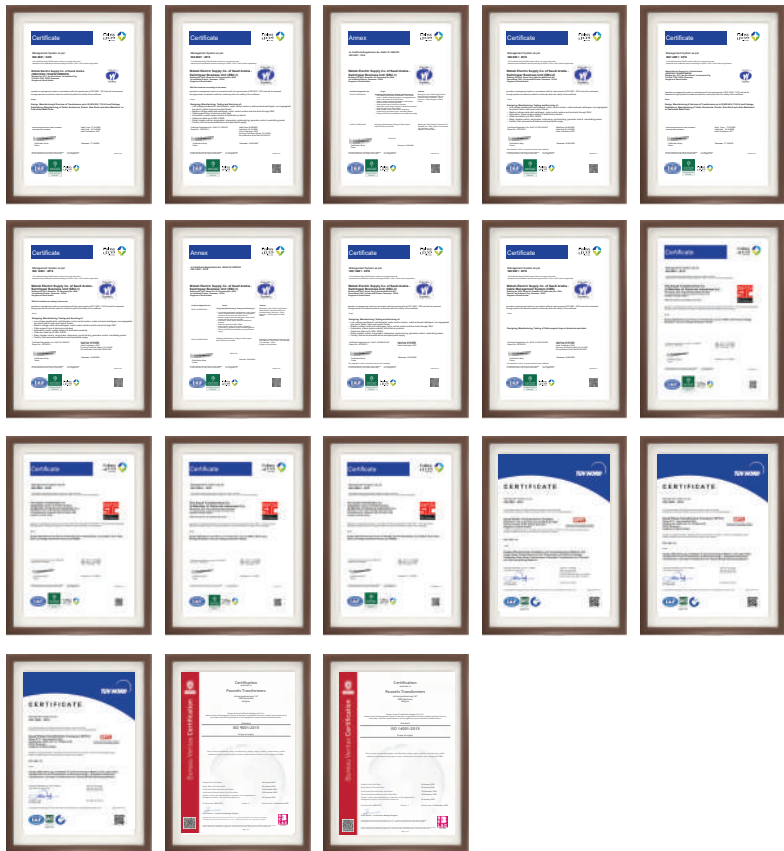


Certifications & Quality Standards



Certifications & Quality Standards

EIC and its subsidiaries are committed to delivering excellence through internationally recognized standards. Our certifications reflect the quality, safety, and environmental responsibility embedded in our operations.



ISO 9001: Quality Management Systems

Ensures consistent product quality and continuous improvement across all manufacturing and service operations.

ISO 14001: Environmental Management Systems

Demonstrates our commitment to minimizing environmental impact through sustainable practices and compliance.

ISO 45001: Occupational Health & Safety Management Systems

Prioritizes the health, safety, and well-being of our employees, partners, and contractors.

IEC Compliance

Products are manufactured to meet global IEC (International Electrotechnical Commission) standards to ensure reliability, safety, and efficiency.

ANSI Standards

Some solutions also comply with ANSI (American National Standards Institute) specifications, catering to global export requirements.

SASO Certification (Saudi Standards, Metrology and Quality Organization)

All applicable products meet SASO regulatory requirements for the Saudi market.

Type Testing

Products undergo routine and type testing at in-house labs and independent laboratories, including KEMA and CESI-certified facilities.



Client Trust & Global Reach



Trusted by Industry Leaders

EIC and its subsidiaries have earned the trust of leading public and private entities across Saudi Arabia and the wider region. Clients include national utilities, industrial giants, and infrastructure developers. These are organizations that rely on EIC's reliability, compliance, and engineering excellence.

We serve long-standing partners such as:

- Saudi Energy (formerly SEC)
- Saudi Aramco
- SABIC
- Major international and EPC contractors
- Ministries and public-sector infrastructure programs

Our solutions are deployed in power generation, transmission, and distribution networks, as well as in oil & gas, transportation, water, and industrial sectors. These relationships reflect our ability to deliver consistently at scale, in complex and mission-critical environments.

Expanding Beyond Borders

EIC's manufacturing and engineering footprint extends well beyond the Kingdom. With active exports to the GCC, Africa, and Europe, and project references across 50+ countries through The Saudi Transformers Company (STC), Wahah Electric Supply Co. of Saudi Arabia Ltd. (WESCOSA), Saudi Power Transformers Company (SPTC) and Pauwels Transformers N.V.-Belgium, we support regional development with globally compliant, locally built solutions.

From mobile substations in remote terrains to large power transformers for international utilities, EIC's portfolio is engineered to meet global standards – including IEC, ANSI, BS, and NEMA.

Our global reach is backed by

- Export-certified manufacturing facilities
- Strong compliance with international testing and quality protocols
- Engineering teams with cross-border project experience



Our Companies

OUR COMPANIES



EIC operates through four specialized subsidiaries, each contributing to EIC's leadership in electrical manufacturing across the Kingdom and beyond.



Saudi Transformers Company (STC)

1. Founded in 1982 under a license agreement with Pauwels Trafo Belgium
2. Manufactures pole-mounted, pad-mounted, slim, and power transformers (up to 5000 kVA)
3. Also produces package and unit substations and low voltage panel boards
4. Serves public and private sector clients across Saudi Arabia and the GCC
5. Complies with IEC and ANSI standards, with in-house testing and servicing capabilities Became part of EIC through the 2005 merger that established the group



Wahah Electric Supply Company of Saudi Arabia Ltd. (WESCOSA)

1. Established in 1976 through a joint venture with Westinghouse Electric (USA)
2. Produces power and distribution transformers, LV/MV switchgears (air/gas insulated), MCCs, control panels, synchronizing panels, panelboards, switchracks, bus ducts, and cable trays
3. Provides a full cable management offering, including trays, ladders, trunking, and metal framing systems
4. Operates an Industrial Services Division covering installation, testing, commissioning, maintenance, calibration, engineering studies, and spare parts
5. Became part of EIC through the 2005 merger that brought together WESCOSA and STC



Saudi Power Transformers Company (SPTC)

1. Established in 2010 through a joint venture with CG Power Belgium, and became fully owned by EIC in 2017
2. Designs and Manufactures MV, HV and EHV power transformers for utility and industrial applications.
3. Product range includes MV, HV, and EHV power transformers from 20 MVA up to 500 MVA, with voltage classes up to 380 kV (including models up to 230 kV).
4. Produces HV/EHV shunt reactors up to 150 MVar, class 380 kV.
5. Serves transmission, distribution, and power generation projects.
6. All products comply with IEC and IEEE standards.
7. Supports major infrastructure and utility projects across Saudi Arabia and the region.

Pauwels Transformers N.V. (Belgium)



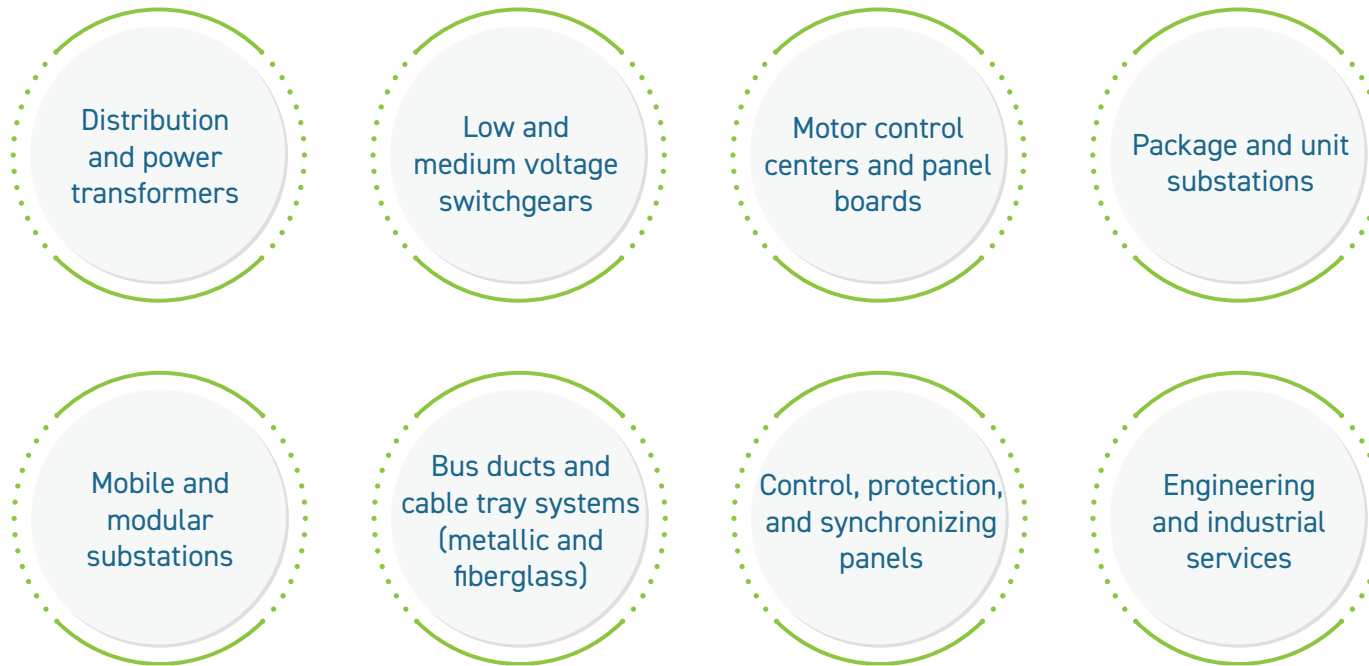
1. Specializes in mobile and compact modular substations and high-voltage power transformers
2. Designs and delivers custom solutions up to 500 kV for utilities, renewables, and industrial sectors
3. Offers both standard and engineered liquid-filled distribution transformers and turnkey substations
4. Operates globally, with project references in more than 50 countries
5. Established by EIC in 2021 as part of its international expansion strategy

PRODUCT PORTFOLIO



EIC delivers one of the region's most comprehensive portfolios of electrical products and services that are designed to power national infrastructure, industrial growth, and global competitiveness.

Through its four specialized subsidiaries, EIC manufactures and supplies:



In addition to manufacturing, EIC offers extensive engineering and industrial services, including testing, commissioning, retrofitting, and maintenance, all delivered through a highly trained field team.

All products are manufactured in compliance with international standards such as IEC, ANSI, BS, and SASO, with certifications supporting quality, safety, and performance.

Together, EIC's companies serve vital sectors such as utilities, oil and gas, infrastructure, and renewables, helping power the Kingdom's transformation and supplying projects across the Middle East, Africa, and Europe.



OUR Products

OUR PRODUCTS & SERVICES

- **Integrated Electrical Solutions Provider**

EIC Group delivers a comprehensive portfolio of electrical equipment, engineering, and services, supporting industrial, utility, and infrastructure sectors with high-quality and reliable solutions.

- **Advanced Switchgear Manufacturing**

Through WESCOSA, the group manufactures a full range of Medium and Low Voltage switchgear up to 34.5 kV, motor control centers up to 5 kV, switchboards, panelboards, busduct systems, and protection and control panels.

- **Transformer Manufacturing Capability**

The group produces distribution, rectifier, and power transformers up to 50 MVA and package/unit substations up to 3,500 kVA through WESCOSA and Saudi Transformers Company, serving both IEC and ANSI market requirements.

- **High-Capacity Transmission Transformers**

SPTC manufactures medium and large power transformers and reactors for transmission applications, including EHV transformers up to 500 MVA, 380 kV, built to international standards for high reliability and performance.

- **Modular Substations & Specialized Transformers**

Pauwels Transformers delivers mobile and compact modular substations up to 500 kV, along with standard liquid-filled distribution transformers and customized transformer solutions for industrial and utility applications worldwide.

- **Cable Management Systems**

WESCOSA designs and manufactures cable management solutions including perforated cable trays, cable ladders, channel trays, and strut systems.

- **Industrial Services & Power System Automation**

The Industrial Services Division of WESCOSA provides turnkey electrical solutions including installation, testing, commissioning, maintenance, retrofitting, engineering support, power system automation, spare parts supply, and ISO-certified calibration services, enabling complete lifecycle support for electrical infrastructure.



Power Transformers

WESCOSA and STC manufacture a comprehensive range of small and medium distribution and power transformers, including both 2-winding and 3-winding designs, with capacities from 500 kVA to 30 MVA and voltage ratings up to 72.5 kV.

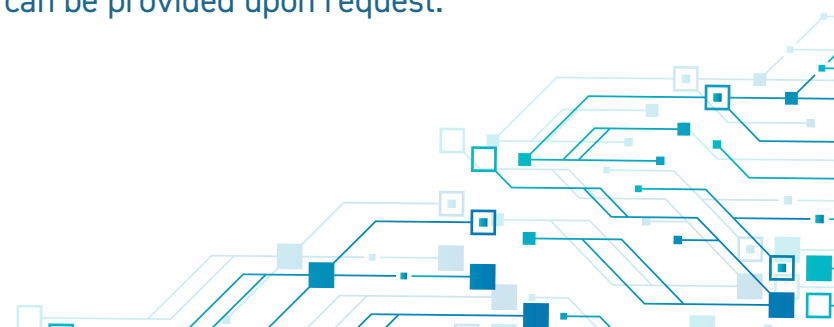
WESCOSA provides different designs to meet both IEC and ANSI standards as well as the customer specifications.

The transformers can be provided with off circuit tap changers or with on load tap changers with required number of tapping.

All exposed live parts are enclosed in cable boxes or compartments when required. Designs for close coupled Cable Bus/busduct are also available.

The Hermetically sealed type or conservator type preservation systems are available with various options for protections and monitoring devices covering oil and winding temperatures, oil levels and pressures. The other specific requirements for online monitoring and Dissolved Gas analysis can also be provided when required.

The transformers with special high fire points liquids like silicone oil, FR3 or ester fluids etc can be provided upon request.





Distribution Transformers

Pole Mounted

WESCOSA and STC provide three-phase overhead pole-mounted distribution transformers with high voltage ratings of 34.5 kV and below, and ratings of 500 kVA and smaller. Single-phase transformers can be provided upon request.

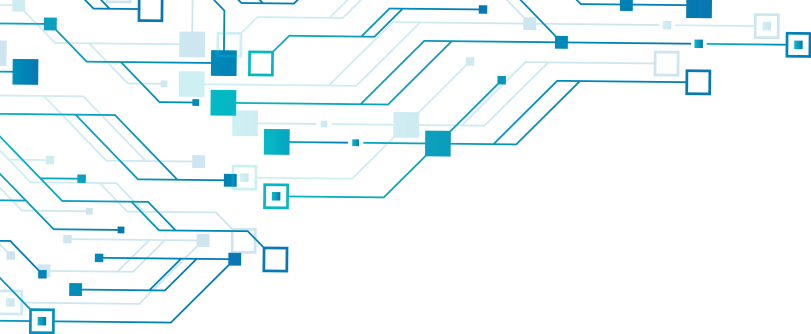
Generally, the high-voltage bushings are on the top cover and the low-voltage bushings on the side, however other customised designs are available as per customer requirements.

Pad Mounted

WESCOSA and STC provide three-phase pad-mounted and ground-mounted distribution transformers with high voltage ratings of 34.5 kV and below, and ratings up to 5 MVA.

Various options for high-voltage and low-voltage open bushings, bushings within cable boxes, or terminations suitable for cable bus or busduct connections are available as per specification and customer requirements.





Compartmental Type Transformers

WESCOSA and STC provide pad-mounted compartmental type distribution transformers as per ANSI/IEEE standards, rated from 45 kVA up to 2500 kVA, with high voltage ratings up to 34.5 kV. These transformers are specifically designed for servicing underground distribution loads for residential areas, shopping centers, schools, and industrial plants.

They are available in both live-front and dead-front construction, for radial and loop-feed applications, with or without fusing and switching.



Dry Typed Transformer

LV Dry Type Transformers

WESCOSA manufactures 2-winding LV dry type transformers as per NEMA and ANSI standards with ratings from 15 kVA to 500 kVA, using vacuum pressure impregnated coils. Typical voltage ratings are 480 V-480Y/277 V, 480 V-220Y/127 V, 480 V-208Y/120 V and 380 V-220Y/127 V. Other special designs may be considered on special request.

The transformers are provided with suitable enclosures for both indoor and outdoor use.

MV Dry Type Transformers

WESCOSA MV dry type transformers range from 50 kVA to 5000 kVA with voltages up to 36 kV. The transformers are manufactured as per IEC 60076-11, however NEMA and IEEE standards can be followed on request.

The transformers are provided with Class F insulation with cast resin HV winding and vacuum pressure impregnated LV winding. Insulation Class H can also be provided when required.

These dry type transformers are suitable for indoor installation and can be supplied with or without enclosures. They are normally used for hospitals, school buildings, shopping malls and industrial plants where there are safety concerns related to fire hazards.



Multi-tap / Rectifier Transformers

Multi-tap / rectifier transformers are used in Electrical Submersible Pump (ESP) systems. These systems require specialised transformers to convert the power supply voltage to the voltages suitable for the pump motor used in the system. WESCOSA multi-tap transformers provide a wider range of taps than general-purpose distribution transformers. The purpose of this wide range is to accommodate motor changes as the voltage requirements vary for each size of ESP motor.

WESCOSA multi-tap transformers are pad-mounted type with enclosed bushings and sealed tanks.

Features:

- ONAN cooling with mineral transformer oil
- Hermetically sealed tank design
- Three phase transformers
- Wide range of taps (standard 25 taps)
- Appropriate top oil and average winding temperature rise to suit desert service conditions
- Drain valve (optional built-in sampler)
- Thermometer and oil level gauge (optional contacts)
- Pressure vacuum gauge (optional) with contacts (optional)
- Primary and secondary enclosed bushings
- Designed for fixed and variable speed drives



Power Control Room (E-House)

WESCOSA manufactures prefabricated substations, also known as Power Control Rooms (PCR) or E-Houses, in line with client requirements, site conditions, and relevant international and client-specific standards.

Our qualified engineering staff, skilled production teams and fully equipped manufacturing facility enable us to deliver complete turnkey solutions under one roof, including engineering, design, material selection, fabrication, inspection, factory acceptance testing, as well as transportation and erection at site. This one-stop approach helps maximise harmonisation and coordination for smooth project delivery.

Specifications

Environment	- For onshore and offshore locations
Size	- Customised as per client and project requirements, up to 75 (L) and 15 (W)
Compliance	- NEMA, IEEE, NEC, ANSI, OSHA, IBC 2000 and CSA - EC 62271-202 (high-voltage / low-voltage prefabricated substation) - 16-SAMSS-524 (Saudi Aramco standard for prefabricated substations)
Corrosivity environments	- CX for severely corrosive environments and C5 for highly corrosive
Structure	- Hot rolled primary steel framing (ASTM A36 / A36M) - Hot dip galvanised - Welding in accordance with AWS D1.1 / D1.1M
Floor	- Heavy duty load bearing floor with epoxy coating
Walls and Roof	- Double skin insulated sandwich panels - Interlocking panel design - Crimped plate modules - UL fire rated doors
Cable openings	- Multi cable transit systems (MCTs)
Lifting	- Minimum 4 lifting lugs per module
Surface finish	- RAL 7035 light grey or as specified



Low Voltage Motor Control Centre Draw out / Fixed

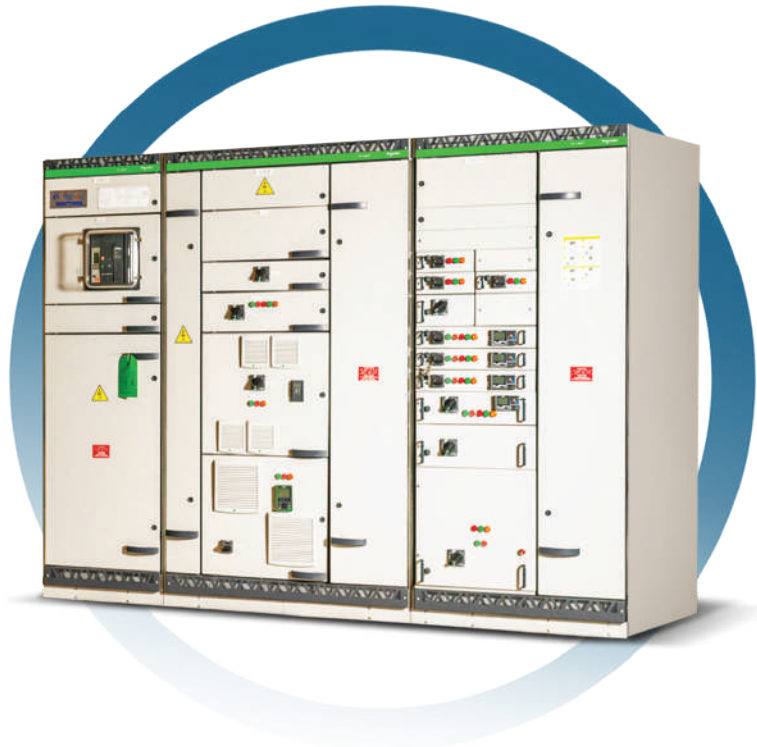
Blokset-Type MW2 LV switchgear is designed, constructed, and tested in accordance with IEC 61439-1 and IEC 61439-2, with internal arc classification as per IEC TR 61641, under licence agreement with Schneider Electric (Platinum agreement)

Ratings are as follows

- Voltage up to 600 V AC, 3-wire and 4-wire
- Maximum busbar rating up to 7000 A, power feeders up to 6300 A
- Conventional starters up to 250 kW, soft starters up to 250 kW, drives up to 160 kW
- Short-time withstand current (ICW) up to 100 kA rms / 1 sec
- Internal arc containment up to 100 kA / 0.4 sec

Features

- Forms of internal separation up to 4b
- Enhanced control and monitoring, with fixed, disconnectable, or withdrawable functional units
- 2G version available for seismic or high vibration environments
- Single-front and double-front access, back-to-back configuration, top or bottom direct power connections, and rear or side power connections for easy installation
- IPMCC (Intelligent Power and Motor Control Centre) is a highly capable and advanced smart solution for fault prevention, protection, and automatic restart, helping improve energy efficiency and reduce downtime for continuous and critical processes



Low Voltage Metal Enclosed Switchgear

Blokset-Type D LV switchgear is designed, constructed, and tested in accordance with IEC 61439-1 and IEC 61439-2, with internal arc classification as per IEC TR 61641, under licence agreement with Schneider Electric (Platinum agreement)

Ratings are as follows

- Voltage up to 600 V AC, 3-wire and 4-wire
- Maximum busbar rating up to 7000 A, incomers up to 6300 A
- Short-time withstand current (ICW) up to 100 kA rms / 1 sec
- Internal arc containment up to 100 kA / 0.4 sec

Features

- Forms of internal separation up to 4b
- 2G version available for seismic or high vibration environments
- Single-front and double-front access, back-to-back configuration, top or bottom direct power connections, and rear or side power connections for easy installation
- Suitable for oil and gas, petrochemicals, mining, metals, minerals, water and wastewater treatment, food and beverage, pharmaceuticals, microelectronics, and airports



Low Voltage Panelboards

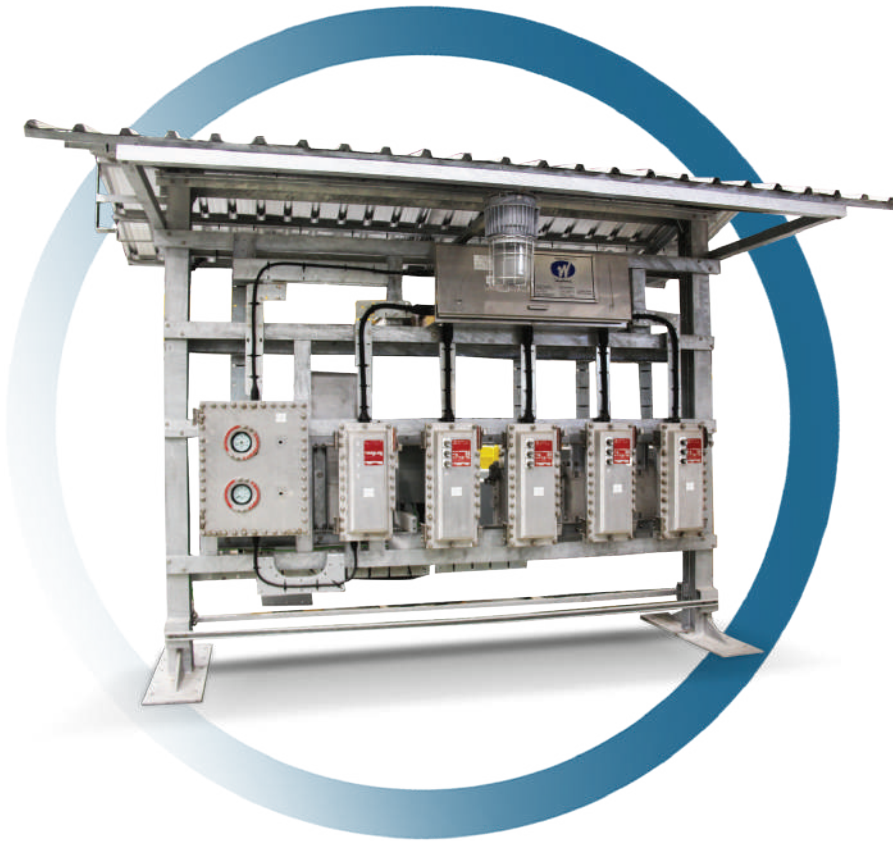
Pow-R-Line 1, 2, and 3A (100 Amp to 600 Amp main bus)

- Standard design utilising Series C circuit breakers
- Increased series ratings (with Series C main circuit breakers) provide higher short-circuit ratings using standard panelboard breakers
- Pow-R-Line 3A can accommodate branch breakers dual-mounted up to 150 Amps, and single-mounted up to 225 Amps
- Lock and door opening mechanism includes a positive slide catch and right or left hand installation, with surface or flush trims
- UL tested and listed, meets NEC and NEMA standards
- PRL-1 240 V AC max, 100 AF branches
- PRL-2 480 V AC max, 100 AF branches, 14 kAIC at 480 V AC
- PRL-3 480 V AC max, 150 AF branches, 65 kAIC at 480 V AC

Pow-R-Line 4B and 4F

- Pow-R-Line 4B panelboard utilises circuit breakers
- Pow-R-Line 4F panelboard utilises type FDPW fusible switches
- A single chassis accommodates both circuit breakers and fusible switches
- Main and neutral are located at the same end to provide additional space for branch devices
- Three-piece trim facilitates installation
- Accommodates Series C circuit breakers to provide higher ratings in a standard chassis and increased series ratings
- UL tested and approved, meets NEC and NEMA standards
- Branch breaker combinations of 100 AF, 250 AF, 400 AF, 600 AF, 800 AF, and 1200 AF





Low Voltage Switchrack

WESCOSA builds high-quality, free-standing, factory-assembled and wired switchracks, custom-built to meet the exact requirements of the customer. Structures are made of steel I-beams and C-channel members, bolted and/or welded, and hot-dip galvanized. Enclosures are either painted NEMA 4, natural stainless steel as NEMA 4X, or natural or epoxy-painted explosion-proof NEMA 4/4X/7 copper-free aluminium. Explosion-proof enclosures are from Crouse-Hinds or equally approved manufacturers.

Switchracks are manufactured to NEMA, UL, CSA, and FM standards, and NEC requirements. They are suitable for outdoor applications in desert environments, corrosive environments, and hazardous locations.





Indoor Metal-Clad ANSI Switchgear

- Manufactured under licence agreement with Powell Industries Inc. (USA)
- Meets ANSI specifications C37.04, C37.06, and C37.20, and tested in accordance with C37.09 and C37.20
- Available in 1-high and 2-high construction configurations

Available in the following ratings

- 4.16 kV to 35 kV
- Short-time withstand current up to 50kA rms / 2 sec
- 1200 to 3000 A
- Custom-designed transition sections to extend existing switchgear of any make

Value-Added Features

35+ Years of Excellence: A trusted partner in the Saudi energy sector for over three decades, maintaining a massive installed base within Aramco's oil and gas infrastructure.

Strategic License Agreement

Operated under an exclusive license agreement with Powell USA to manufacture, assemble, test, and supply world-class switchgear to the Saudi Arabian market.

Customizable Footprint

Special narrow-design options available for restricted space installations.

Enhanced Safety

Optional Arc-Resistant construction upon request.



Medium Voltage Air-Insulated IEC Switchgear (Metal-Enclosed)

Medium Voltage air-insulated, metal-enclosed switchgear, WMVGEARA switchgear fully type-tested at independent laboratories in accordance with the following international standards:

IEC 62271-1, IEC 62271-200, IEC 62271-100 and IEC 62271-102.

Ratings are as follows

- Voltage: 4.16kV to 17.5kV
- Maximum busbar rating up to 3600A (forced cooling)
- Short-time withstand current up to 25kA rms / 3sec
- Internal arc classification 25kA / 1 sec

Value-Added Features

SE Approved

Fully pre-qualified and approved by the Saudi Energy (SE) for use in the Kingdom's distribution and transmission networks.

Premium ABB VD4 Integration

Features the globally recognized ABB VD4 Vacuum Circuit Breaker, known for its maintenance-free vacuum interrupters and high number of switching cycles. This integration significantly reduces Total Cost of Ownership (TCO) and minimizes downtime.

Personnel Safety (AFLR)

Beyond standard testing, our Internal Arc Classification (IAC) of 25kA/1sec is designed to provide protection on all four sides (Front, Lateral, and Rear), ensuring a "Safety First" environment for operators.



Medium Voltage Air-Insulated IEC Switchgear & Controlgear (Metal-Enclosed)

Medium Voltage air-insulated, metal-enclosed switchgear, HMS type, under licence agreement with Hyundai Electric, South Korea

Ratings are as follows

- Voltage: 4.16 kV to 17.5 kV
- Maximum busbar rating up to 4000 A with forced cooling
- Short-time withstand current up to 50 kA rms / 3 sec
- Internal arc classification 50 kA / 1 sec (AFLR)

Value-Added Features

Strategic License Agreement

Operated under an exclusive license agreement with Hyundai Electric, South Korea to manufacture, assemble, test, and supply worldclass switchgear to the Saudi Arabian market.

Direct Integrated Design

Features a unified architecture allowing for the seamless integration of switchgear and controlgear without the need for additional transition or adapter panels, ensuring a more compact and reliable lineup.

Personnel Safety (AFLR)

Beyond standard testing, our Internal Arc Classification (IAC) of 50kA/1sec is designed to provide protection on all four sides (Front, Lateral, and Rear), ensuring a "Safety First" environment for operators.

Industry 4.0 Ready

Features optional Integrated Condition Monitoring technology for real-time health tracking, supporting the transition from manual to predictive maintenance.



Medium Voltage SF6-Free Gas Insulated Switchgear (using 100% Dry Air)

Medium Voltage SF6-Free Gas-insulated, metal-enclosed switchgear model: nu1 Dry Air, fully type-tested at independent laboratories in accordance with the following international standards:
IEC 62271.

Ratings are as follows

- Voltage: 24kV to 36kV
- Maximum busbar rating up to 2500A.
- Short-time withstand current up to 31.5kA rms / 3sec
- Internal arc classification 31.5kA / 1 sec (AFLR)

Value-Added Features

Pioneering the Future

The World's First 100% IEC Type-Tested 36 kV Dry-Air GIS with 100% dry Air insulation.

Strategic License Agreement

Operated under an license agreement with Nuventura, Germany to manufacture, assemble, test, and supply world-class switchgear to the Saudi Arabian market.

Robust gas tank tested to 1.3 times the maximum operating pressure as per latest IEC 62271-200 (2021 edition)

Personnel Safety (AFLR)

Beyond standard testing, our Internal Arc Classification (IAC) of 31.5kA/1sec is designed to provide protection on all four sides (Front, Lateral, and Rear), ensuring a "Safety First" environment for operators.

Space Saving Solutions

Panels having width dimension as small as 650mm.



Medium Voltage SF6 Gas Insulated Switchgear

Medium Voltage SF6 Gas-insulated, metal-enclosed switchgear model: ABB ZX2.0, fully type-tested at independent laboratories in accordance with the following international standards:

IEC 62271

Ratings are as follows

- Voltage: 12kV to 36kV
- Maximum busbar rating up to 3150A (Forced cooling)
- Short-time withstand current up to 40kA rms / 3sec
- Internal arc classification 40kA / 1 sec (AFLR)

Value-Added Features

VD4X Vacuum Technology

Integrated with the VD4X vacuum circuit breaker, which is capable of up to 30,000 switching operations, drastically reducing the need for internal maintenance.

Arc-Resistant Design (AFLR)

Fully tested for Internal Arc Classification (IAC) up to 40 kA for 1 second. The gas-insulated design ensures that even in the event of an arc, the hot gases are managed through integrated relief ducts.

Integrated Condition Monitoring

The ZX2 can be equipped with sensors for gas density, temperature, and partial discharge. This data can be integrated into a SCADA system for predictive maintenance.

Massive Footprint Reduction

Offers up to a 70% reduction in space compared to Air-Insulated Switchgear (AIS). This lowers civil construction costs for substations.



5 kV, 360 A (Class 400 A), 50 kA Motor Control Centre

- Employs Allen-Bradley vacuum contactors and isolating switches
- Meets NEMA ICS3 specifications
- Tested in accordance with NEMA ICS3 and UL 347 at KEMA, Netherlands
- Available in 1-high and 2-high construction configurations.

5 kV, 600 A up to 40 kA Outdoor Motor Control Centre

- Employs Allen-Bradley vacuum contactors and isolating switches
- Approved in Saudi Aramo under 16-SAMSS-507 standards.
- Stainless Steel 316L graded enclosure
- Locally Designed & Manufactured: Engineered and assembled within Saudi Arabia to meet specific regional environmental conditions and local regulatory standards. Fully supporting Vision 2030 localization goals.



Annunciator Panels

WESCOSA annunciator panels are manufactured with annunciation units from various brands, including RTK, to meet ANSI and NEMA standards

Annunciator

- Microprocessor based
- Field programmable
- Compact unit
- Programmable common relay output
- High-speed event capture (1 ms)
- Auxiliary relay outputs from windows (optional) for remote annunciation
- Rugged construction
- Modbus output
- Windows available in five colours (white, red, amber, green, blue)
- Suitable for indoor and outdoor applications
- Four different window sizes to choose from

Available with six different auxiliary power supply options

- 24 V DC / 48 V DC / 125 V DC / 250 V DC / 120 V DC / 240 V AC
- Transmitter / alarm signal conditioning module (optional) for analogue inputs
- Compact multi-tone hooter providing 28 different tones
- Free-standing with front or rear access design, or wall-mounting type
- Protection category IP41 to IP54



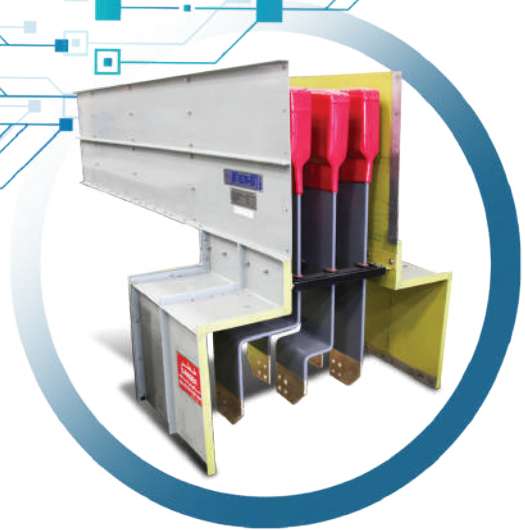
Protection and Control Panels

WESCOSA protection and control panels are designed and manufactured to provide a high degree of protection and control for power system equipment, i.e. transmission lines, busbars, power transformers and breakers

Features

- Microprocessor-based / numerical protective relays
- High-accuracy analogue / digital meters (optional)
- Custom-designed mimic diagrams (optional)
- Freestanding and wall-mounted panel designs available
- Fixed and swing-type 19" rack construction available for relay, meters and pilot devices on floor-mounted panels
- Glazed door for floor-mounted panels to view front-mounted components
- Dead-front construction with rear- or front-access control panels
- Test switch to facilitate testing of relays and meters from the front of the panel
- Panel protection: NEMA Type 1, IP41 to IP44
- Meets ANSI, NEMA and IEC standards





Synchronizing Panels

WESCOA synchronizing panels are designed and manufactured to meet demanding power system requirements

Features

- Microprocessor-based auto-synchronizer
- One synchronizing unit controls multiple systems with up to six different sets of breaker closing parameters
- Suitable for small diesel units to large hydros
- Synchronizer unit suitable for automatic control of generators
- Manual and automatic synchronizing modes
- Custom-designed mimic diagram
- High-accuracy analogue / digital meters (optional)
- Test switch to facilitate testing of relays and meters from the front of the panel
- Dead-front construction with rear or front access

Busduct

- Non-segregated busduct ratings: 600 V to 15 kV, up to 5000 A
- Segregated-phase busduct ratings: up to 15 kV, 5000 A
- Conforms to ANSI and NEMA standards

Cable Bus

WESCOA cable-bus systems provide efficient, dependable and high-quality installations for transmitting power between equipment

Ratings

- 600 V to 15 kV
- 800 A to 6000 A

Withstands up to 100 kA (rms) short-circuit current



Cable Management System

WESCOSA manufactures a complete range of cable management solutions at its advanced facility in Dammam. Designed for reliability, strength, and long service life, all systems are produced and tested in accordance with the latest NEMA and IEC 61537 standards, ensuring dependable performance across industrial, commercial, and infrastructure projects.

CABLE LADDER (WESLADDER)

A heavy-duty cable ladder system featuring welded, box-shaped flat rungs for superior strength, stability, and smooth cable pulling, available in multiple spacings, load depths, and material options to suit diverse industrial and commercial applications.

CABLE TRAY (WESTRAY)

Channel-type cable trays supplied in standard lengths and various widths and heights, manufactured in aluminium, galvanized steel, and stainless steel (304/316L) with ventilated or solid bottoms for flexible and durable cable routing.

CABLE TRUNKING

Robust cable trunking systems available in aluminium, galvanized steel, ANSI grey-finished steel, hot-dip galvanized steel, and stainless steel (304/316), providing secure, organized, and corrosion-resistant cable containment.

METAL FRAMING (WESTRUT)

Versatile metal framing channels designed to span between structural supports and provide indirect hanger rod support, available in multiple configurations and materials including galvanized carbon steel, aluminium alloys, and stainless steel 304.



Fiberglass Cable Management System

Product Features

- Corrosion-resistant and non-conductive material ideal for harsh environments
- High strength-to-weight ratio for superior load-bearing capacity
- UV resistant for outdoor installations
- Fire retardant and low smoke generation

End User Benefits

- Extended service life with minimal maintenance.
- Safe for electrical applications due to non-conductivity.
- Ideal for harsh and corrosive environments
- Durable performance in outdoor and industrial settings.
- bonding jumper is not required for fiberglass cable tray systems (cost saving)

Environmental Benefits

- Manufactured using low-emission processes.
- Long lifespan reduces replacement waste.
- Non-toxic and safe for sensitive environments.
- Supports green building certifications.



Industrial Services Division

WESCOSA's Industrial Services Division (ISA) specializes in providing industrial services and the supply of advanced equipment for Power System Automation and Substation Automation Solutions. Since 1995, our dedicated field services department has utilized a multidisciplinary team of qualified engineers and senior technicians to provide comprehensive technical support for all types of electrical infrastructure.

Scope of Services

1. Construction Works
2. Testing and Commissioning
3. Equipment Replacement
4. Maintenance
5. Upgrading and Retrofitting
6. Transformer Services
7. Engineering
8. Electrical Spare Parts Supply



Automation and Power System Solutions

Products & Solutions Power Systems (PSA / SCADA / DMS / RTU) Execution and Support

WESCOSA delivers holistic supervisory control and monitoring solutions for local substation assets—including HV GIS, MV/LV switchgear, protection relay panels, VFDs, UPS, and fire alarm systems—as well as for remote infrastructure. Project-specific configuration and parameterization of SCADA and HMI application software are executed by our certified automation engineers.

Our solutions include

- End-to-end integration of SCADA, RTU, and Substation Automation systems, including SCADA interface panels and adaptation works
- Solutions for integrating new substations with existing LDC/DMS control centers, including modification of legacy protection schemes and implementation of bay-level control, metering, and monitoring systems
- Design of high-performance operator workstation HMIs for RTU and SCMS environments, supported by advanced engineering and in-house CAD capabilities
- Deployment of secure SDH/PDH communication networks and in-house manufacturing of IEC-compliant automation cubicles and racks for specialized applications
- Modernization and replacement of control systems for critical standby generators, including RGCP, AMF, LMS, RGMS, and ATS equipment
- Comprehensive maintenance, retrofitting, and technical support to ensure reliable longterm operation of automation and control systems





Advanced Metering Infrastructure (AMI System)

Advanced Metering Infrastructure (AMI) is an integrated system of smart meters, communication networks, and data management frameworks. It enables secure, two-way communication between smart meters and the Master Data Management (MDM) center.

WESCOSA's AMI system is engineered to meet the technical standards of the **National Grid / Saudi Energy (SE), including 40-TMSS-03, 31-TMSS-01, and 01-TMSS-01.**

WESCOSA Automation Panels and Consoles

We provide integrated supervisory control and monitoring solutions for local and remote substation environments. Our certified automation engineers ensure that every project is configured to meet specific operational logic and protection requirements.

WESCOSA automation panels and consoles are manufactured in strict accordance with national and international standards, including:

- **Saudi Aramco:** 16-SAMSS-514 and 34-SAMSS-820.
- **National Grid (SEC):** 31-TMSS-01 and 01-TMSS-01

Automation & PSS Services

The WESCOSA Automation and Power System Solutions (APSS) Department provides integrated solutions in power system and substation automation, PMCS, EPMS, industrial automation, and building management systems.

With strong expertise in **Power Quality Studies and Solutions**, the team performs harmonic, voltage stability, and power factor studies, delivering turnkey solutions such as Active Harmonic Filters (AHF), Static Var Compensators (SVC), capacitor banks, and advanced monitoring systems to eliminate disturbances, prevent utility penalties, and protect assets—fully aligned with Saudi Aramco and Saudi Energy (SE) standards.





Saudi Power Transformers Company (SPTC)

The Saudi Power Transformers Company Ltd. (SPTC) is the leading power transformer manufacturing company in Saudi Arabia and the GCC.

SPTC manufactures medium and large power transformers and reactors up to 500 MVA, 380 kV for transmission, substations, and thermal and gas power plants, compliant with IEC, BS, ANSI, and IEEE standards. Using copper windings, advanced insulation, robust tank construction, and rigorous testing, SPTC ensures high reliability, durability, and fast delivery.

Our transformers are delivered with oil and assembled as much as transportation restrictions and road conditions allow us to. With the SPTC Medium Power transformer, projects can be realized in a shortest possible time - thus underlining again: "SPTC commitment to customer satisfaction".

Capacity up to

500 MVA

AC primary voltage

380 kV

Frequencies

50/60 Hz



شركة محولات الطاقة السعودية
SAUDI POWER TRANSFORMERS COMPANY





Core Construction

SPTC transformers utilize a core-form design with high-grade grain-oriented silicon steel and step-lap mitered joints to reduce losses, noise, and magnetizing current, while precision-built circular cores enhance mechanical strength, temperature control, and short-circuit performance for quiet, efficient operation.

Windings

Circular, concentric windings with copper conductors—insulated with paper, Nomex[®], or continuously transposed cables—ensure high short-circuit strength, efficient cooling, controlled losses, and superior mechanical reliability through precision tension-controlled winding.

Insulation

Fully oil-impregnated pressboard insulation eliminates voids and partial discharge risks, while precompressed spacers and optimized oil flow design ensure long-term electrical integrity and high short-circuit withstand capability.

Core and Coil Assembly

Phase-by-phase assembly with solid insulation barriers and stress-control components ensures precise oil gap management, robust clamping, and enhanced insulation integrity, followed by vapor-phase drying for maximum dielectric and mechanical strength.

Tanks

Computer-optimized steel tanks are engineered to withstand full vacuum conditions and include reinforced lifting, jacking, and handling features, with comprehensive surface treatment, painting, and leak testing to ensure durability and long service life.



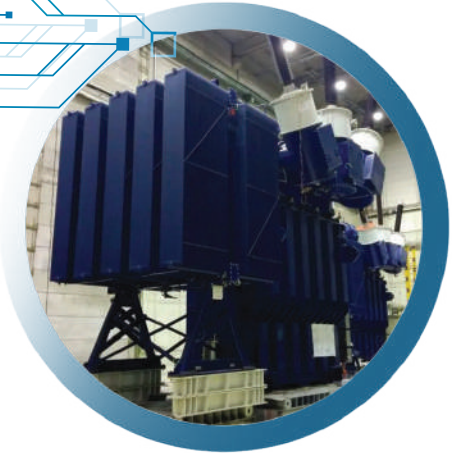
PAUWELS Transformers N.V. Belgium

Pauwels Transformers has extensive expertise in the design and manufacture of high-voltage distribution and power transformers at the top end of the range for the transmission of electrical energy. Each power transformer is individually designed to meet customer requirements and the most stringent specifications and applications. Pauwels Transformers provides efficient and innovative solutions, always anticipating customer needs.

Pauwels Transformers has established a strong reputation as a manufacturer of quality distribution and power transformers. The company takes pride in delivering products with safe, reliable performance and excellent lifecycle value.

Pauwels Transformer service department is the one-stopshop for all technical support and spare parts.

Products are designed to meet the latest ECO- Design "Tier 2" efficiency standards and manufactured in accordance with IEC and ANSI standards, and ATEX requirements, up to 525 kV and 750 MVA (up to 1,000 MVA for autotransformer designs).





Distribution Transformers

Pauwels Transformers offers a wide range of liquid-filled distribution transformers (as per EN50708), meeting the latest ECO-Energy efficiency ("Tier2) standards. The standard product range also includes SLIM[®] transformers that are smaller, lighter, capable of handling severe overloads and safer because of the application of Class K dielectric fluids. In addition, Pauwels Transformers offers Bio-SLIM[®] transformers with a fully biodegradable transformer fluid, as a result of which it can be used in environmentally sensitive locations, such as for renewable energy in solar, onshore and offshore wind applications.

IEC and ANSI standard, Eco norm and ATEX designs. Up to 72kV 30MVA.



Power Transformers

Pauwels Transformers has extensive expertise in the design and manufacturing of high voltage power transformers – top of the range for the transmission of electrical energy, meeting the most stringent requirements and applications. The company takes pride in manufacturing products with a safe and reliable performance, providing excellent life-cycle value.

IEC and ANSI standard, Eco norm and ATEX designs. Up to 525kV 750MVA (up to 1000MVA for autotransformer designs).

Services

Pauwels Transformers offers a full range of after-sales services, including installation, commissioning, maintenance, refurbishment and repairs of transformers worldwide.



شركة الصناعات الكهربائية
ELECTRICAL INDUSTRIES CO.

ELECTRICAL INDUSTRIES CO. GET IN TOUCH

ADDRESS

First Industrial City of Dammam,
P.O. Box 6033, Dammam 31442,
Kingdom of Saudi Arabia

CONTACT US

Tel: +966 13 810 0280
Fax: +966 13 810 0265
Email: info@eic.com.sa
Website: www.eic.com.sa